



National Telecommunications Safety Panel

Benchmarking Survey Summary

2007 ITSC – Niagara Falls, NY



Benchmarking Survey Summary

2007 ITSC – Niagara Falls, NY

- 10 Companies participating in 2006
- Occupational Injury/Illness experience
 - MSD data for Ergonomic Alliance

<u>Year</u>	<u># Employees</u>	<u># of CTDs</u>	<u>CTD Incident Rate</u>
• 2006	605,177	1589	0.26
• 2005	538,516	1483	0.25
• 2004	547,037	3055	0.56
• 2003	546,259	4073	0.75
• 2002	578,577	4849	0.84

- Motor Vehicle Incident experience
- OSHA Contact and Citation experience
- Professional staffing levels and organization description



Benchmarking Survey Summary

2007 ITSC – Niagara Falls, NY

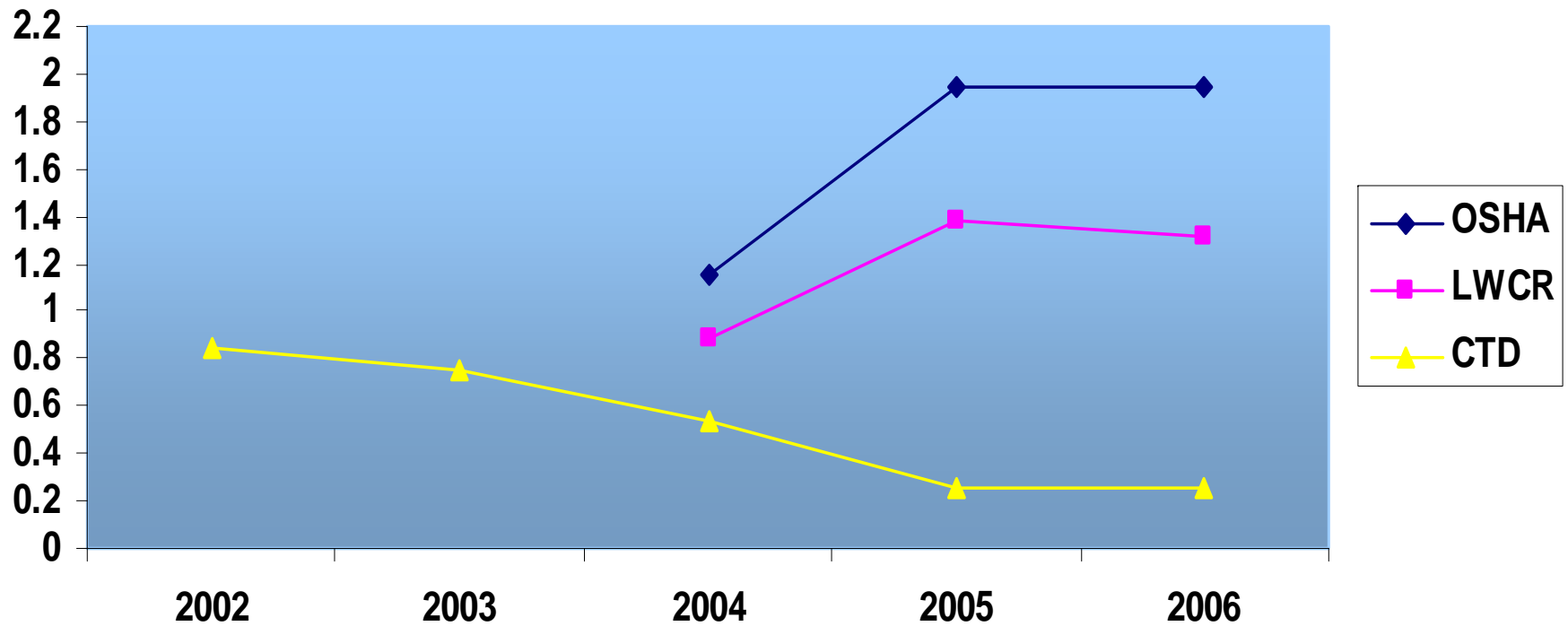
- ↑ 605,177 Total Employees
- ↑ 2.80 per 10,000 employees
 - 169 Safety/IH/Ergo Professionals
- ↑ 2.31 per 10,000 employees
 - 139 Environmental Professionals
- ↓ 14 Contractors
- ↓ 14 DOT Professionals
- ↑ 5.33 Total Staff per 10,000 employees
- ↓ 119 OSHA Complaints
- ↓ 18 OSHA Citations



Benchmarking Survey Summary

2007 ITSC – Niagara Falls, NY

Frequency

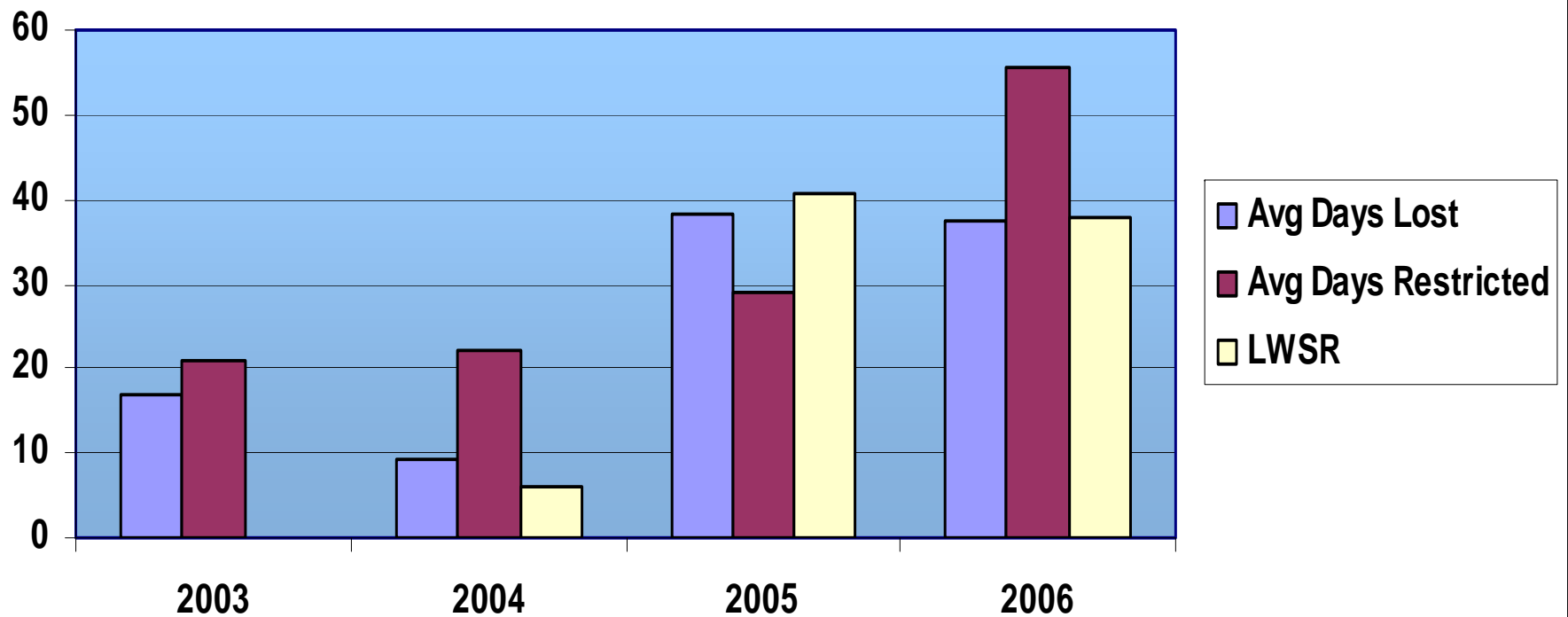




Benchmarking Survey Summary

2007 ITSC – Niagara Falls, NY

Severity

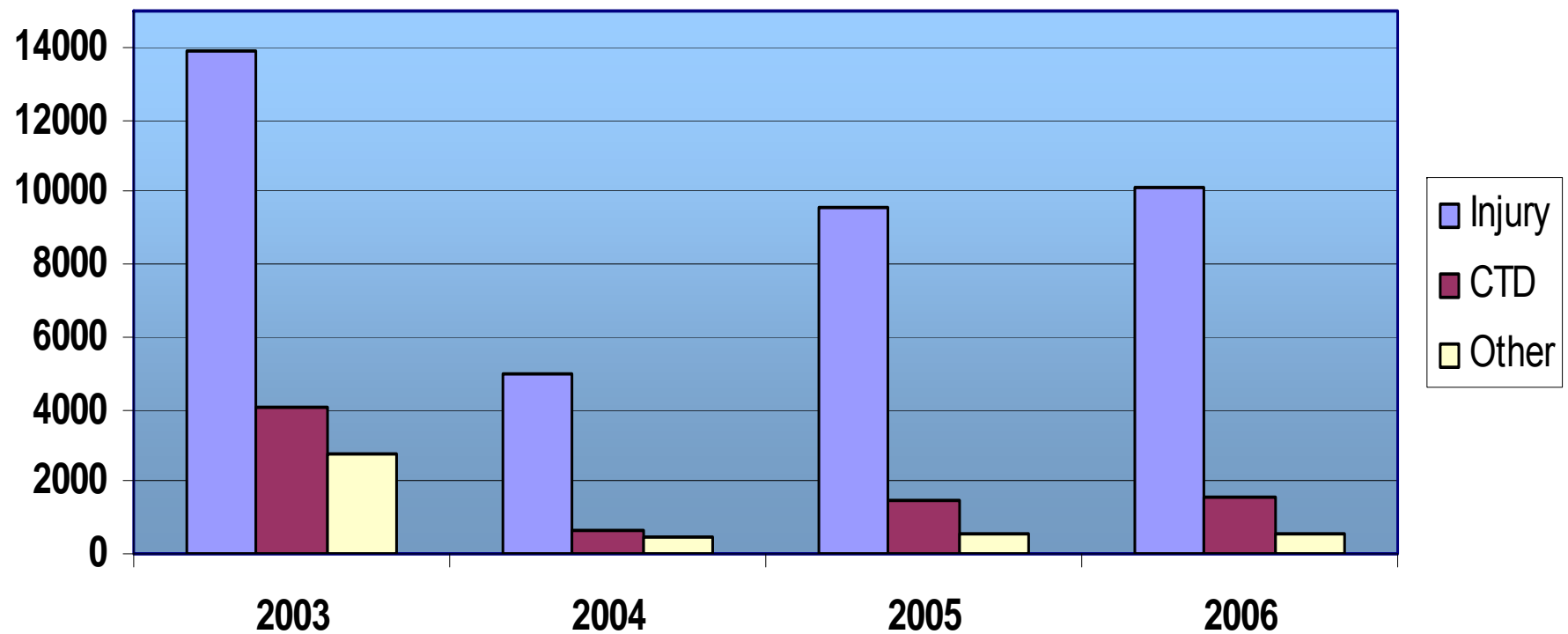




Benchmarking Survey Summary

2007 ITSC – Niagara Falls, NY

Type of Incident

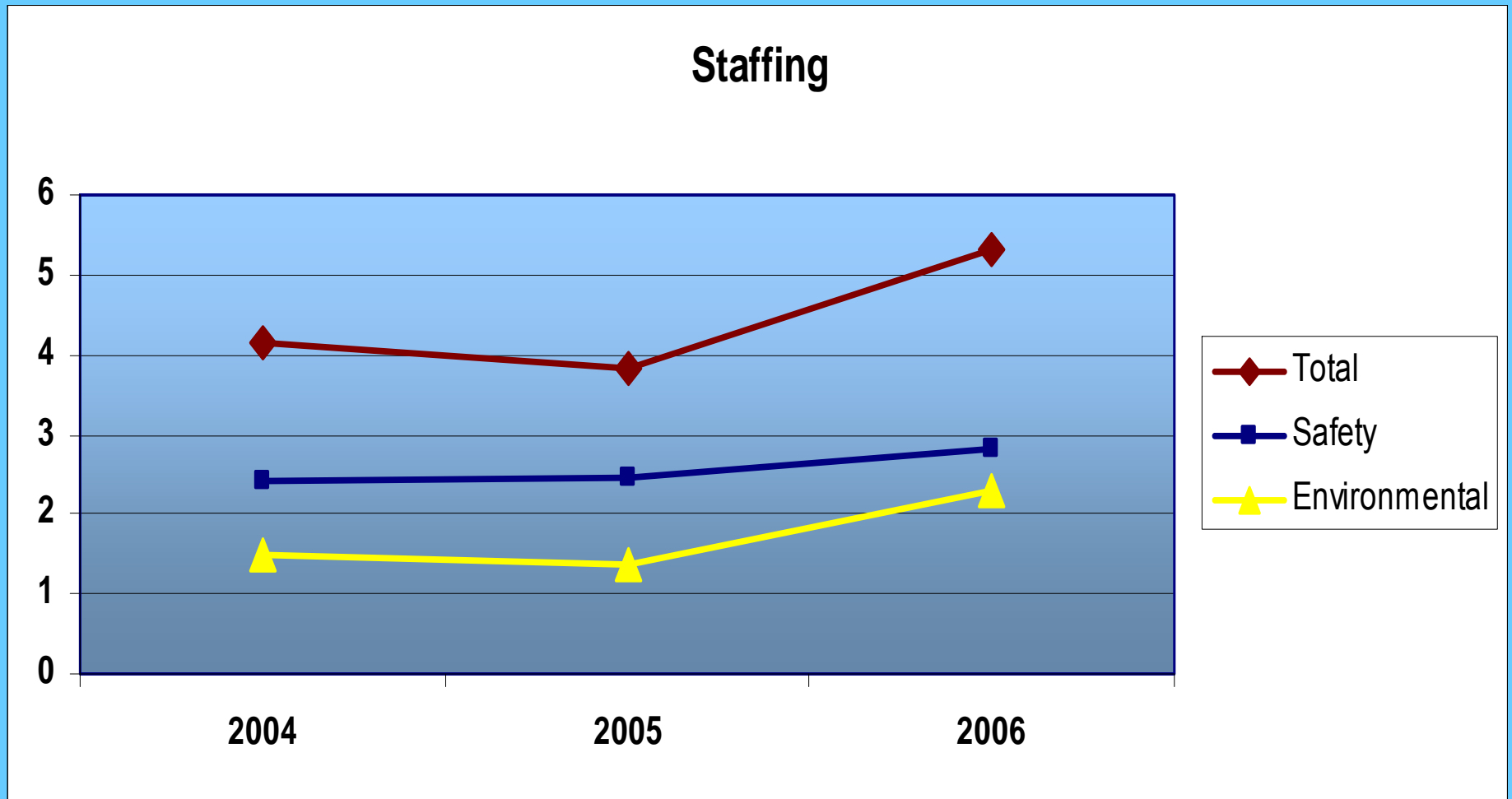




Benchmarking Survey Summary

2007 ITSC – Niagara Falls, NY

Staffing





Benchmarking Survey Summary

2007 ITSC – Niagara Falls, NY

- Slip/Trip/Falls
- Cumulative Trauma
- Lift/Carry/Push/Pull/Sprain/Strains
- Rear End Incidents
- Backing/Stationary Object Incidents
- Intersection Incidents

Participation is Encouraged!