



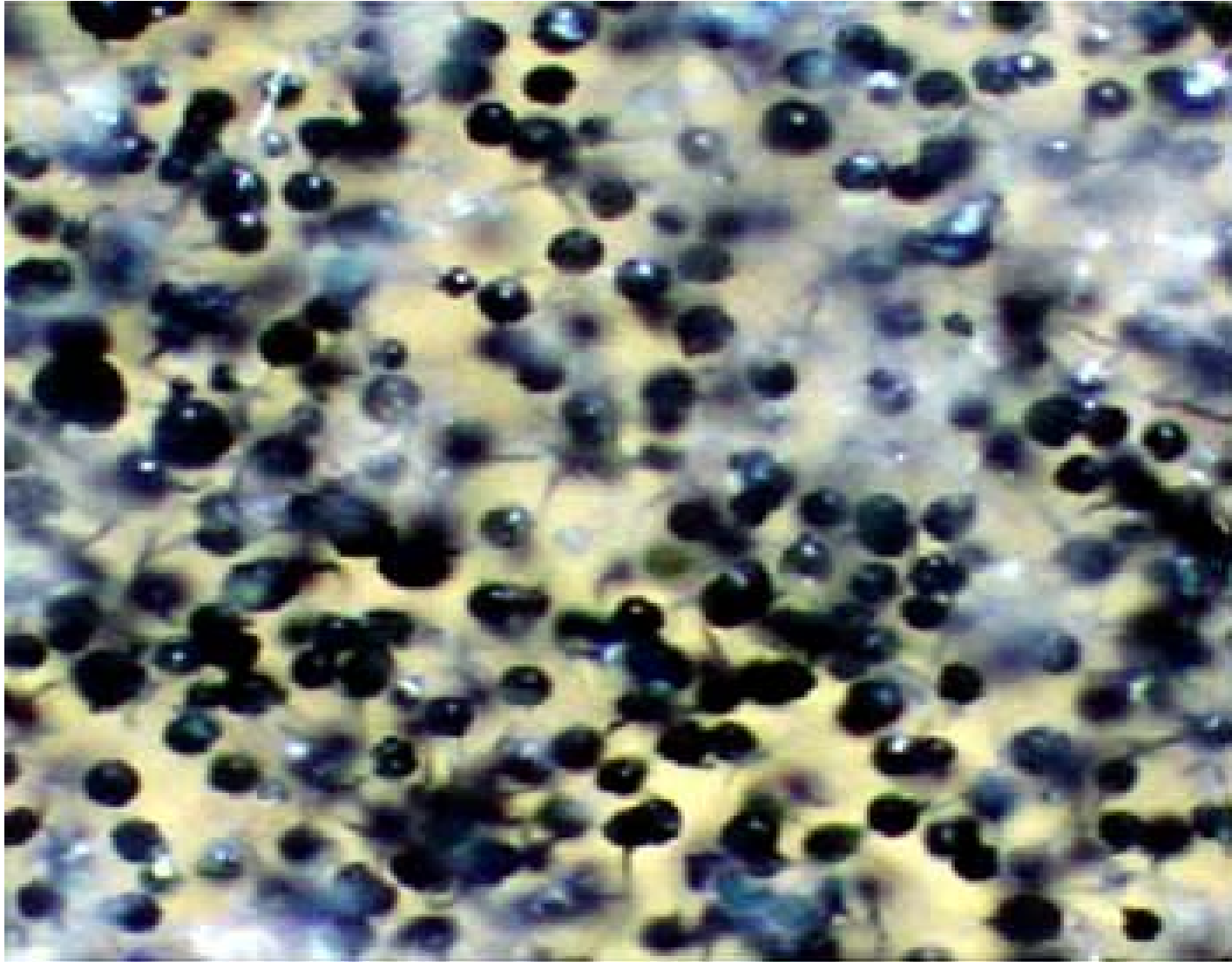
Safety Management

Mold Photos

Ken Shaw, CIH



ASPERGILLUS



STACHYBOTRYS CHARTARUM



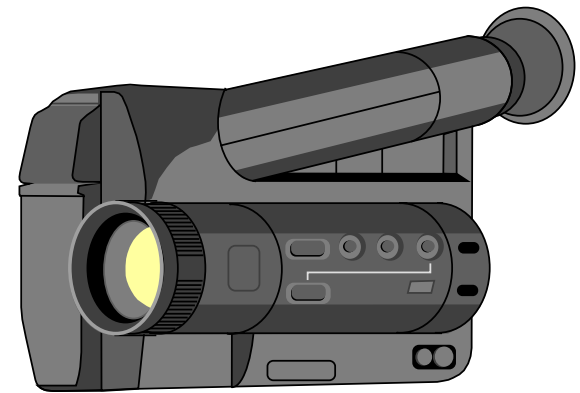
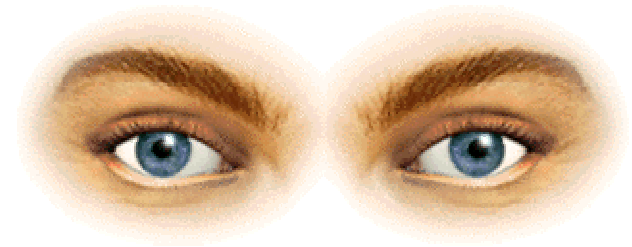
Mold showing filaments and typical woolly appearance



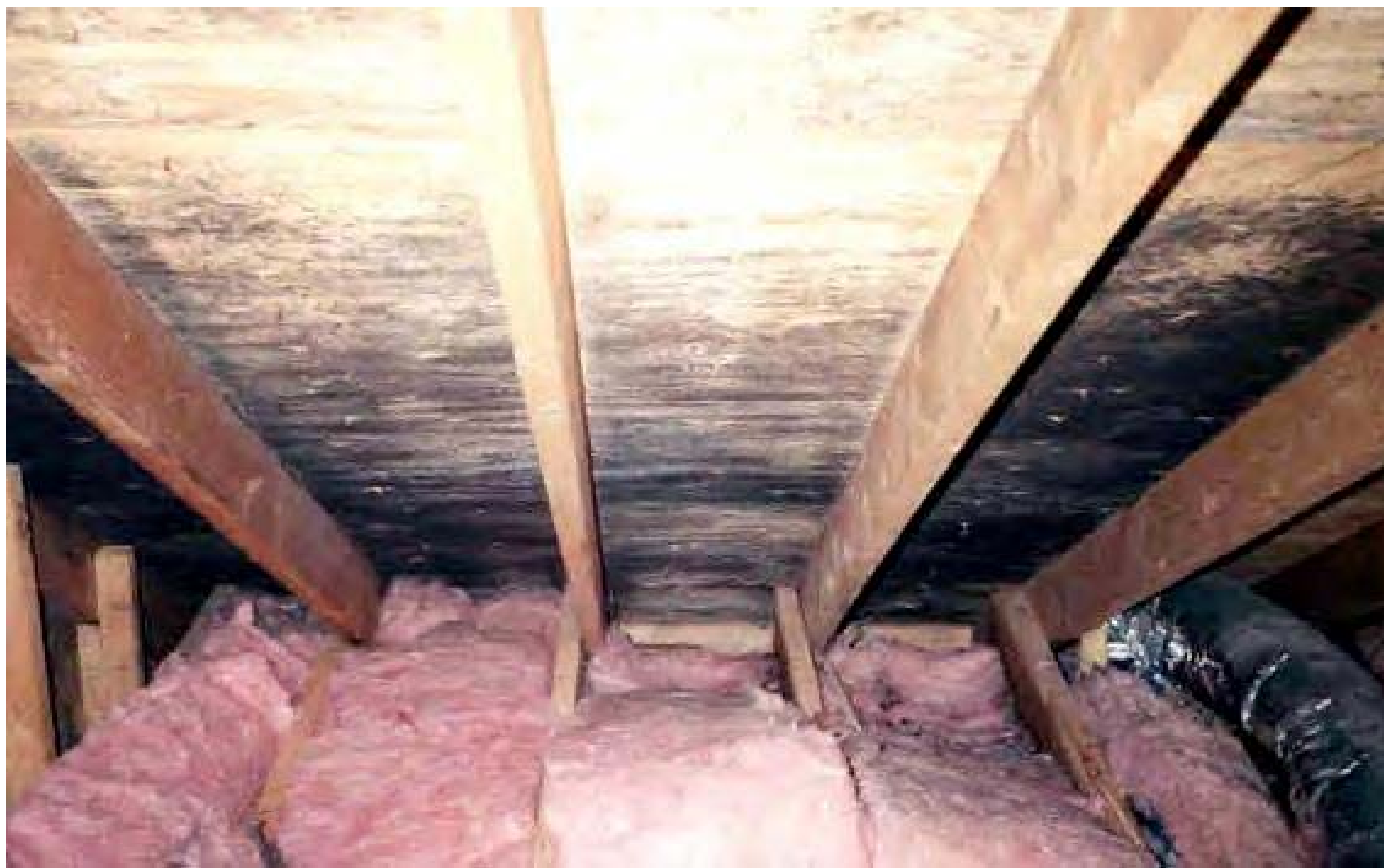
BORESCOPE - Used to inspect inside walls



Moisture meters - Quantifies moisture content of solids



Visual Observation - The best starting point



Stachybotrys mold on rafters and plywood in attic (generic photo)



Mold growth in corner of a room (generic photo)



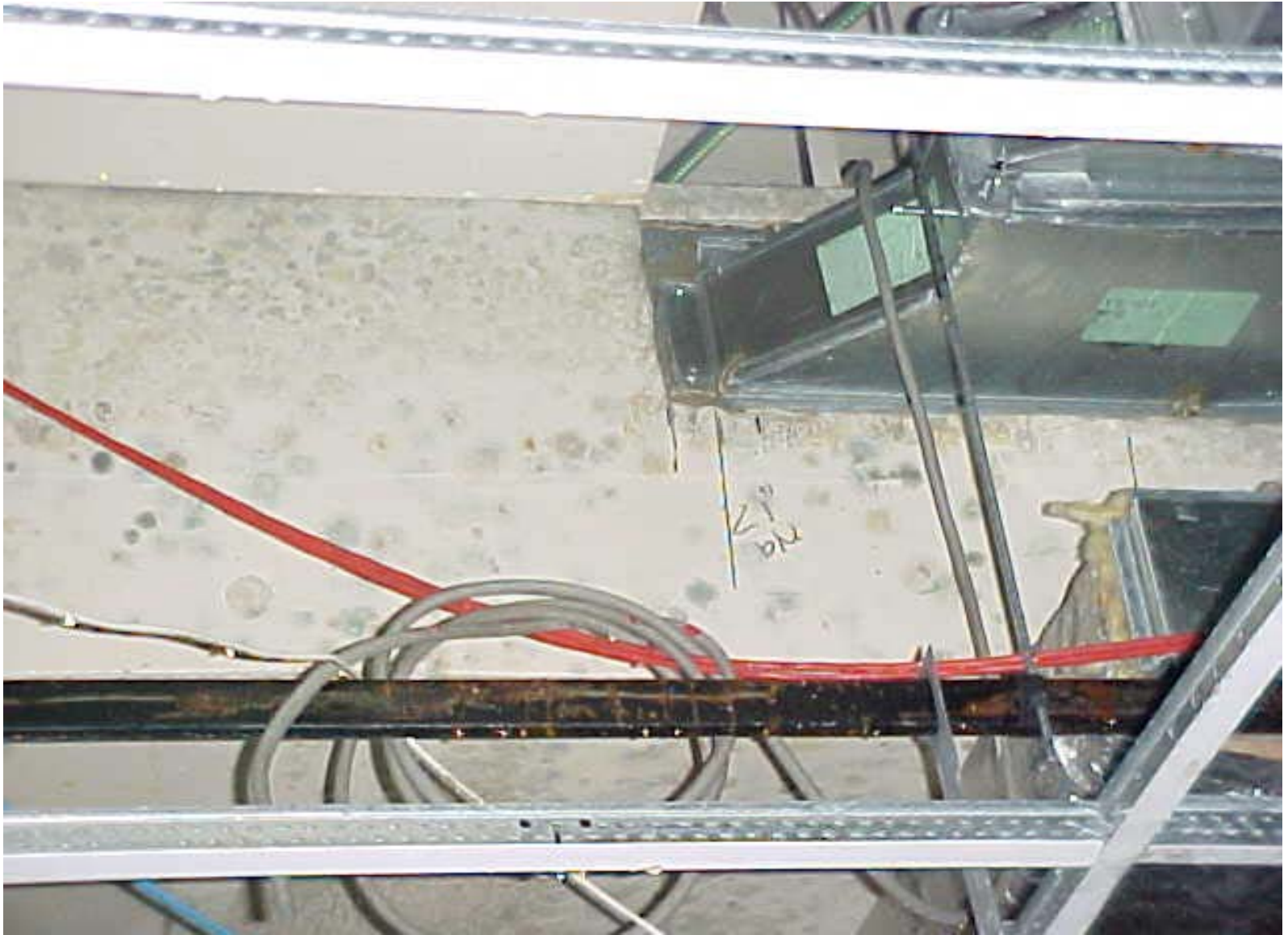
Mold Growth near floor level. What is the moisture source?



Long-term water leak. Plastic with water accumulation.



Peeling Paint - Indicative of moisture/water migration



Mold growth on wall - note circular colonies



Mold on ventilation duct exterior





Mold on wall after a flood - 3 weeks of growth





Mold growth on wall board - flooded basement



Storage room in basement - 3 weeks of mold growth



Mold on column and other surfaces - flooded basement



Moldy chair and medical records - basement after a flood



Basement office after flood - 3 weeks mold growth



Mold growth on walls and above ceiling - 3 weeks



Extreme mold growth in a basement - 6" "fuzz" on ceiling



Mold Growth on Ceiling - 3 weeks



Mold Growth - “woolly” appearance visible



Uncontrolled / Extensive Mold Growth



Uncontrolled / Extensive Mold Growth



Uncontrolled / Extensive Biological Growth



Uncontrolled / Extensive Biological Growth



Localized mold growth that can be cleaned in-house